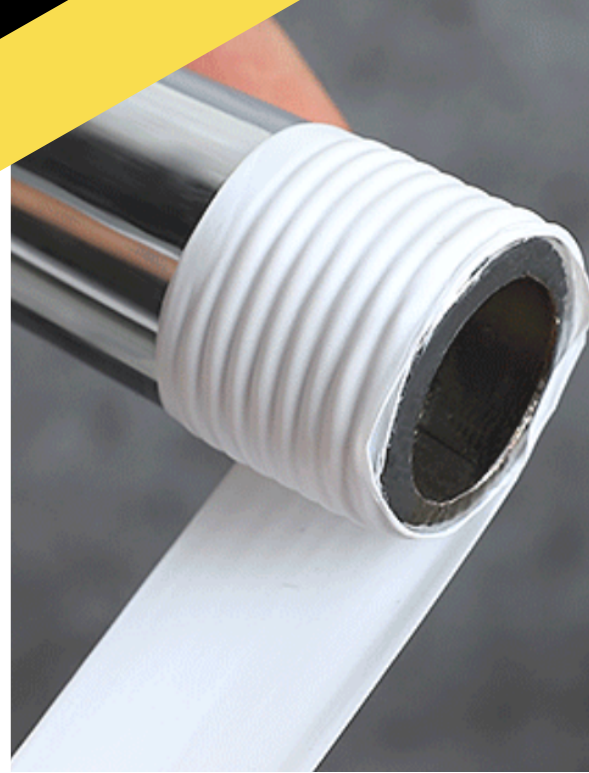


2023 - 2024
CATALOGUE



PLUMBING ESSENTIALS

WWW.CHEMTOOLS.COM.AU



CONTENTS

| CATEGORIES | PAGE |
|-----------------------|---------|
| Accessories | 15 |
| Adhesives | 3 - 6 |
| Cleaning Solutions | 14 |
| Hand Cleaners | 9 |
| Leak Detection | 13 |
| Lubricants | 7 - 9 |
| Paints & Coatings | 11 - 12 |
| Soldering Consumables | 13 |
| Specialised Greases | 10 |

| FEATURED PRODUCTS BY BRAND | PAGE |
|---|------|
| CHEMTOOLS® | |
| Alkaline Drain Cleaner, Concentrated | 14 |
| Brush, General Utility | 15 |
| Brush, Soft Brass Steel | 15 |
| Brush, Acid (Single-Use) | 15 |
| Needle Dispensing Kit, 50pc (Assorted Tips) | 15 |
| Rust, Lime & Calcium Remover, Heavy Duty | 14 |
| Solder Wire - Lead | 13 |
| Solder Wire - Lead Free | 13 |
| Syringes, Fully Assembled | 15 |
| Wipes, Lint Free | 14 |
| DEOX | |
| R1™ Multi-Purpose Lubricant | 7 |
| - R1™ Spray Bottle, Empty, 500ml Capacity | 7 |
| R14 Silicone Paste, Universal | 8 |
| R20 Machine Grease | 10 |
| R22 'Citrashift' Industrial Cleaner & Degreaser | 14 |
| R44 Solvent-Free Lubricant | 7 |
| - R44 Spray Bottle, Empty, 500ml Capacity | 7 |
| R56 Super Lubricant | 7 |
| - R56 Spray Bottle, Empty, 500ml Capacity | 7 |
| R60 Silicone Spray, Heavy Duty | 8 |
| R60 Silicone Spray with PTFE, Heavy Duty | 8 |
| GALMAX™ | |
| 90 Cold Galvanising Paint (Brushable & Sprayable) | 12 |
| NPR Coloured Galvanising Paint (Assorted Colours) | 12 |
| SG Silver Galvanising Paint, 3-in-1 | 12 |
| HYDROLUBE | |
| Gas Leak Detection Spray | 13 |
| Pipe Jointing Compound with PTFE | 9 |
| Tap Lubricant Gel, Anti-Wear | 9 |

| FEATURED PRODUCTS BY BRAND | PAGE |
|--|------|
| KLEANITIZE | |
| Hand Cleaner, Heavy Duty, Citra-Grit & Mint-Grit | 9 |
| KLEANIUM | |
| Isopropyl Alcohol, 99.8% Pure | 14 |
| LANOFLEX™ | |
| R50 Lanolin, General Purpose | 8 |
| R55 Lanolin, Heavy Duty (Marine Grade) | 8 |
| RAPIDSTICK™ | |
| 8-145 Epoxy Putty | 5 |
| 8-150 Epoxy, Ultra Clear (5 Minute) | 5 |
| 8-250 Epoxy, Ultra Clear (15 Minute) | 5 |
| 8-300 MMA/Structural Adhesive (Metals & Plastics) | 3 |
| 8-5811 Thread Sealant (Potable Water & Gases, Variable Pressure) | 4 |
| 8243 Threadlocker, Blue (Oil Tolerant) | 4 |
| 8401 Instant Adhesive (Surface Insensitive, Porous Materials) | 3 |
| 8480 Instant Adhesive (Impact Resistant, Rubber Toughened) | 3 |
| Adhesive Removal Pen, Fibreglass | 5 |
| Adhesive Spray, Multi-Surface | 4 |
| Pipe Repair Bandage Kit | 5 |
| PITBULL 101 Fast Grab Hybrid Sealant | 6 |
| RS-50 Liquid-Fix Construction Adhesive | 6 |
| RS-60 All-In-One Silicone Sealant | 6 |
| Silicone Repair Tape, Self Fusing | 3 |
| Thread Seal Tape, PTFE | 4 |
| SPOT-IT | |
| Spot Marking Paint (Assorted Colours) | 11 |
| TAP-N-COOL | |
| Straight Cutting Fluid | 7 |
| THERMALLE™ | |
| OXYGUARD ▪ Oxygen Safe Grease with PTFE, Non-Flammable | 10 |
| TEF-EASE ▪ Anti-Corrosion & Anti-Seizing Gel, Dissimilar Metals | 10 |
| VIOFLUX | |
| Flux Paste, High Activity | 13 |
| Liquid Flux, High Activity | 13 |



ADHESIVES

RAPIDSTICK™ 8401 INSTANT ADHESIVE (CYANOACRYLATE) SURFACE INSENSITIVE • POROUS MATERIALS

Bonds difficult surfaces with high industrial strength.

For manufacturing and repair applications with rough, porous, or acidic surfaces.

Commonly bonds leather, wood, rubbers, plastics, metals, and ceramics.

**Meets Military Specification:
MIL-A-46050 Type II, Class II**

| PART NO. | SIZE |
|----------|---------------|
| 8401-10 | 10g Brush Top |
| 8401-20 | 25ml Bottle |
| 8401-50 | 50g Bottle |
| 8401-500 | 500g Bottle |



| | | |
|------------|-----------------|----------------------------|
| VISCOSITY | MEDIUM | GAP FILLING UP TO .20mm |
| CURE SPEED | LOW MED FAST | TEMP -60°C MIN MAX +80°C |
| STRENGTH | LOW MEDIUM HIGH | |

RAPIDSTICK™ 8480 INSTANT ADHESIVE (CYANOACRYLATE) IMPACT RESISTANT • BLACK RUBBER TOUGHENED

Excellent resistance to peel and shock loads.

For various rubbers, metals, magnets, and plastics used in difficult environments.

- ✓ Speaker assemblies
- ✓ Electronic & electrical components
- ✓ Computer assemblies & disc drives
- ✓ Automotive parts

| PART NO. | SIZE |
|----------|-------------|
| 8480-20 | 25ml Bottle |
| 8480-50 | 50g Bottle |
| 8480-500 | 500g Bottle |



| | | |
|------------|-----------------|----------------------------|
| VISCOSITY | MEDIUM | GAP FILLING UP TO .30mm |
| CURE SPEED | LOW MED FAST | TEMP -60°C MIN MAX +80°C |
| STRENGTH | LOW MEDIUM HIGH | |

RAPIDSTICK™ 8-300 MMA/STRUCTURAL ADHESIVE • METALS & PLASTICS

NO SLUMP • NO MESS • SET & FORGET FOR A LIFETIME BOND

Methyl Methacrylate (MMA) adhesives, also known as acrylics or 'structural adhesives', are a type of two-component adhesive system widely used for bonding various materials. They consist of a base resin (methyl methacrylate monomer) and a catalyst (peroxide), which react together to form a strong and durable bond.

MMA's/Structural Adhesives offer several advantages, including fast curing times, high bond strength, excellent impact resistance, and good chemical resistance. They are known for their ability to bond a wide range of materials, including metals, plastics, composites, glass, ceramics, and wood.

MMA's are suitable for structural bonding applications where high strength is required, as well as for general-purpose bonding.

MMA's are tough, versatile adhesives which can bond dissimilar materials - even with different coefficients of thermal expansion.

The Rapidstick™ MMA/Structural Adhesive range is guaranteed to outperform most other types of adhesives or anchoring technologies. Find more MMA's online at:

www.chemtools.com.au



Excellent impact, peel, and shear resistance. Bonds metals, thermoplastics, thermosets, and composite assemblies.

Excellent adhesion to porous, non-porous, smooth, rough, or irregular surfaces.

Bonds dissimilar materials with high differential flexibilities, such as rigid metal to flexible plastic.

| PART NO. | SIZE |
|-----------|----------------------|
| 8-300-25 | 25ml Dual Syringe |
| 8-300-50 | 50ml Dual Cartridge |
| 8-300-400 | 400ml Dual Cartridge |

| | | | |
|----------------------|-----------------|-------------------------|------------------------------|
| SUPER STRONG! | FAST SET | OPEN TIME 4 - 6 MINS | FIXTURE TIME 12 - 15 MINS |
| | VISCOSITY | 90,000 - 100,000 | CPS THIX |
| | GAP FILL | UP TO 9.5mm | |
| | TEMP | -40°C MIN MAX +121°C | |

RAPIDSTICK™ SELF FUSING SILICONE REPAIR TAPE



Made from high grade stretchable silicone gum. Bonds to itself. Provides an instant airtight, waterproof seal.

Non-flammable and suits extreme conditions and environments. Withstands heat up to 260°C. Remains flexible in temperatures as low as -62°C.

Tear and abrasion resistant. Can be removed by razor after full cure (24 hrs).

Resists acids, fuels, oils, salt water, UV rays, and many solvents. Withstands pressure, voltage, moisture, corrosion, and contaminants. Absorbs vibration.

High tensile and dielectric strengths. Insulates immediately upon stretching and wrapping. Excellent for plumbing, vents, and ducts.

Great for adding grip to tools and sports equipment, connecting wire harnesses, wrapping cables, and more.

Leaves no sticky residue. Will not become gummy over time.

| PART NO. | SIZE | COLOUR |
|------------|-------------------|--------|
| 8-FT-25-BK | 25mm (W) X 3M (L) | Black |



ADHESIVES

RAPDISTICK™ 8243 THREADLOCKER • OIL TOLERANT (BLUE)

Tolerates minor surface contamination with an increased resistance to industrial oils. Ideal for securing as-received parts. Will not run, drip, or migrate.

Suitable for medium and coarse-threaded screws, nuts, and bolts of less active material, such as stainless steel and plated fasteners.

✓ EXCELLENT
THREADLOCKER
FOR SERVICING
& REPAIR

Meets Military Specifications:
MIL-S-46163 Type II, Grade N
MIL-S-22473E Letter Grade CVV

| PART NO. | SIZE |
|----------|--------------|
| 8243-10 | 10ml Bottle |
| 8243-50 | 50ml Bottle |
| 8243-250 | 250ml Bottle |

COLOUR
DURABILITY
VISCOSITY
STRENGTH
HANDLING CURE
TEMPERATURE

| BLUE | |
|-----------|----------------|
| PERMANENT | NON-PERMANENT |
| 2,250 | CPS THIX |
| LOW | MEDIUM HIGH |
| MINS | 10 20 30 40 50 |
| -55°C MIN | MAX +150°C |



RAPDISTICK™ 8-5811 THREAD SEALANT POTABLE WATER & GASES • VARIABLE PRESSURE

Soft setting methacrylate ester compound. High grade protection against corrosion, shock, and vibration.

Seals against gas, water, oil, hydrocarbons, LPG, and many different chemicals. Will not creep, shrink, gall, migrate, or block systems.

Suitable for all metal threads on pipes, joints, and fittings.

Approved by: Australian Gas Association

Cert. No: AGA 8831 G

Class III, 2,000 kPa Rated
Working Pressure



| PART NO. | SIZE |
|------------|------------|
| 8-5811-50 | 50ml Tube |
| 8-5811-250 | 250ml Tube |

| | |
|------------|------------------------------------|
| COLOUR | YELLOW |
| VISCOSITY | CPS THIXOTROPIC 24,000 - 80,000 |
| HAND. CURE | MINS 10 20 30 40 |
| STRENGTH | LOW MED HIGH |
| THREADS | UP TO 76mm (3") |
| TEMP | -54°C MIN MAX +148°C |



RAPDISTICK™ MULTI-SURFACE ADHESIVE SPRAY

Advanced and versatile rubber tack.

Strong and durable bond.

Non-staining formula.

For light to heavy duty applications.

Expelled as a mist from a moderate flow-rate spray valve for over-spray control.

Ideal for electrical and industrial repair, framing, crafts, and other projects.

Provides fast bonding after a conveniently long open time - allows for fine repositioning and minor adjustments of bonded surfaces.



*Excludes structural bonding

| PART NO. | SIZE |
|-----------|--------------|
| 8-ADS-400 | 400g Aerosol |

- ✓ Metals*
- ✓ Plastics
- ✓ Rubber
- ✓ Insulating Materials
- ✓ Corrugated Cardboard
- ✓ All Paper Types
- ✓ Cork
- ✓ Wood
- ✓ Vinyl
- ✓ Leather
- ✓ Foam
- ✓ Sponge
- ✓ Felt
- ✓ Fabrics



RAPDISTICK™ PTFE THREAD SEAL TAPE

Made of 100% PTFE. For use on tapered threads. Resistant to most common chemicals. Seals threaded pipe connections between -268°C and +260°C. Lubricates and prevents galling, seizing, and rusting.

For critical applications such as gas, oxygen, or large, coarse threads

STANDARD (White)

Commonly used for general, all-round, and less critical applications

HEAVY DUTY (Pink)

Suitable for pressure-based or powerful spurts and sprays

| PART NO. | DENSITY | TYPE | THREAD DIAMETER | TAPE COLOUR |
|-------------|----------|------------|-----------------|-------------|
| CT-TP12-10P | 0.4g/cm³ | Heavy Duty | 12.7mm - 50.8mm | Pink |
| CT-TP12-10W | 0.3g/cm³ | Standard | Up to 9.5mm | White |
| CT-TP12-10Y | 0.5g/cm³ | Gas | 12.7mm - 50.8mm | Yellow |



ADHESIVES

RAPIDSTICK™ PIPE REPAIR BANDAGE KIT

Kit includes all necessary components

Suitable for both professionals and DIY enthusiasts alike

Water activated bandage. High strength and durable. Essential tool for emergency pipe maintenance.

Made from strong, flexible, corrosion-resistant material.

Withstands high pressure and extreme temperatures. Seals and reinforces pipe leaks, cracks, or bursts.

Provides an instant, quick, and effective seal to prevent further leakage, minimising downtime and potential damage.

Resistant to a wide range of chemicals, ensuring compatibility with different pipe systems

✓ Acids ✓ Alkalis ✓ Solvents ✓ Oils

Forms a permanent repair when applied correctly, offering a reliable solution until long-term repairs can be implemented.

Compatible with metal, plastic, and rubber piping, from small household pipes to larger industrial pipelines.

| PART NO. | BANDAGE SIZE | KIT CONTENTS |
|-------------|-----------------------|---------------------------|
| 8-PBK-0536 | 5cm (W) x 3.6M (L) | Each boxed kit includes: |
| 8-PBK-7527 | 7.5cm (W) x 2.7M (L) | • Water Activated Bandage |
| 8-PBK-12536 | 12.5cm (W) x 3.6M (L) | • Steel Epoxy Putty |
| 8-PBK-1536 | 15cm (W) x 3.6M (L) | • Disposable Gloves |

RAPIDSTICK™ 8-150 & 8-250 EPOXY

Flexible, super high strength bond.

Tough, rigid, and non-shrinking.

Resistant to water and most common solvents.

Dries ultra clear - perfect for transparent repairs or invisible seams.

Versatile: use on a wide range of materials as a gap filler, or for surface repairs and laminating.

Combine with fibreglass cloth for a durable patch. Tint with earth pigments, cement, or sand for colour matching.

Can be rubbed back and drilled after drying.

| COLOUR | DRIES CLEAR |
|----------|----------------------|
| STRENGTH | HIGH UP TO 3426 PSI |
| TEMP | -23°C MIN MAX +150°C |

- ✓ Metal ✓ Glass ✓ Wood ✓ Tile
- ✓ Ceramics ✓ China ✓ Rigid Plastics
- ✓ Fibreglass ✓ Stone ✓ Concrete

| PART NO. | GEL TIME | SIZE |
|----------|-----------------|-------------------|
| 8-150-25 | Approx. 5 mins | 25ml Dual Syringe |
| 8-250-25 | Approx. 15 mins | 25ml Dual Syringe |

RAPIDSTICK™ 8-145 KNEADABLE EPOXY PUTTY

CUT - MIX - SHAPE - APPLY

Tough and impact resistant. High bond strength. Consists of two parts in a 1:1 mix ratio. Apply by hand or trowel.

Excellent adhesion to most surfaces, wet or dry.

Perfect for reshaping damaged parts. Permanently repairs cracks, holes, dents, and leaks. Mounts signs to walls for long-term display. Can be sanded, drilled, tapped, machined, filed, and painted after hardening.

CURES AT ROOM TEMP: Remains soft and pliable for 4 - 5 mins after thorough mixing. **Cures hard as metal** within 15 to 20 mins.

REPAIRS chips, cracks, dents, splits, breaks, and most surface or structural blemishes

| PART NO. | SIZE & QUANTITY |
|--------------|--|
| 8-145-57-POS | COUNTER DISPLAY POINT OF SALE (POS) BOX Contains 36 x Epoxy Putty Sticks, 57g each |

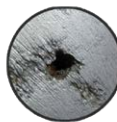
Left: Un-combined putty stick showing the Resin (outer layer) and Hardener as it arrives in the tube. Right: Kneaded putty turns a uniform pale grey colour when fully combined.

BEFORE KNEADING

AFTER KNEADING

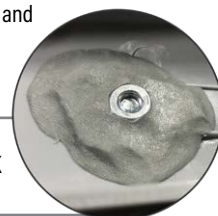


SEALS leaks in pipes, tanks, and filters quickly and easily



FILLS unwanted spaces, holes, and gaps - and seals air flow

BONDS to wet and dry surfaces, permanently fixing in place



Mixed Viscosity: 1.90 @ 25°C
Flash Point: >80°C
Full Cure: 12 hours

Shore D Hardness: 75 - 78
Tensile Shear Strength: 6.1 MPa
Temp Resistance: 110°C

Compression Strength: 81 MPa
Thermal Conductivity: 0.1 W/mK
Dielectric Strength: 11 kV/mm

RAPIDSTICK™ FIBREGLASS ADHESIVE REMOVAL PEN

Made from fine fibreglass adjustable length threads.

Effortlessly removes dried-up adhesive. Handy and versatile for small spot removal projects.

Perfect for cleaning, polishing, and burnishing applications.

Great for rust removal, contact cleaning, solder mask and decal removal, cleaning of pads, de-burring metal parts, and more.

Twist the end to customise the thread length for each separate application



Note: Not suitable for use on wet surfaces.

Great for dry, oxidised spot cleaning

| PART NO. | HOUSING SIZE | THREAD BUNDLE |
|----------|------------------------|---------------|
| 8800P | 12mm diam x 120mm long | 4mm diameter |

ADHESIVES

RAPIDSTICK™ PITBULL 101 FAST GRAB HYBRID SEALANT

Solvent-free and based on the latest polymer technology. Primerless adhesion to most substrates. Performs in excess of 20 years.

Bonds to moist and dry surfaces. Excellent UV resistance. Excellent abrasion, oil, and solvent resistance. Apply under most environmental conditions. Cures to a tough, elastic adhesive/sealant.

Can be tooled within 10 minutes of application, and painted after curing.

Flagged as an essential fast-grab sealant due to its long life expectancy.

BK

WT

GY

| PART NO. | COLOUR | SIZE |
|----------------|--------|-----------------|
| 8-HBS101BK-300 | Black | 300ml Cartridge |
| 8-HBS101WT-300 | White | 300ml Cartridge |
| 8-HBS101GY-300 | Grey | 300ml Cartridge |

COMMON APPLICATIONS

- Perimeter sealing plastic, timber & metal frames
- Sealing & bonding flexible connection joints in air conditioning, ducting, and ventilation systems
- Sealing expansion & construction joints

RAPIDSTICK™ PITBULL 101 OFFERS ALMOST NO SURFACE LIMITATIONS*

- ✓ All metals, including soft metals
- ✓ Mirrors & glass
- ✓ Natural stone, granite & marble
- ✓ Concrete, tiles & bricks
- ✓ Wood, including timber, MDF, cork, and chipboard
- ✓ Plaster, laminates & most plastics
- ✓ Polystyrene and polyurethane

*Suitable for use under most environmental conditions.

**BONDS • MOUNTS • SEALS
NAILS IT EVERY TIME**



RAPIDSTICK™ RS-60 ALL-IN-ONE SILICONE SEALANT



Single component neutral curing low odour formula.

Ideal for expansion joints exposed to the outside elements.

Forms a permanent and durable elastomeric seal.

Waterproof and unbeatably tough after cure.

Non-tacky, non-slumping, and highly adhesive.

Will not degrade or lose flexibility over time.

Apply to un-primed or painted surfaces with no reduction in performance.

Resistant to UV damage, fading, abrasion, cracking, and shrinking. Mould and mildew resistant.

Suitable for use in harsh environments or under extreme temperature conditions.

COMPATIBILITY

- Primed/un-primed surfaces
- Electronic PCBs & components
- Electrical devices
- Expansion joints
- Timber & wood
- Concrete & bricks
- Most plastics
- All metals, incl. soft & coated
- Glass
- Laminates
- Drywall & plaster
- Granite, marble, porcelain & stone
- Ceramics

SM NEW!

SV

CL

BK

WT

GY

| PART NO. | COLOUR | SIZE |
|--------------|---------------------|-----------------|
| 8-RS60CL-300 | Clear | 300ml Cartridge |
| 8-RS60WT-300 | White | 300ml Cartridge |
| 8-RS60BK-300 | Black | 300ml Cartridge |
| 8-RS60GY-300 | Grey | 300ml Cartridge |
| 8-RS60SV-300 | Silver | 300ml Cartridge |
| 8-RS60SM-300 | Colorbond® Surfmist | 300ml Cartridge |

RAPIDSTICK™ RS-50 LIQUID-FIX CONSTRUCTION ADHESIVE

NEW!



Versatile, high quality, and 'strong-as-nails'.

Suitable for high-stress construction or DIY. Exceptional bond strength, durability, and impact resistance.

For porous and non-porous materials, indoor or outdoor.

Safe: non-flammable and non-toxic.

Odourless PU base contains no hazardous ingredients.

Water, weather, mould, and mildew resistant.

Will not discolour, sag, or weaken over time.

Can be polished and painted after cure.

BG

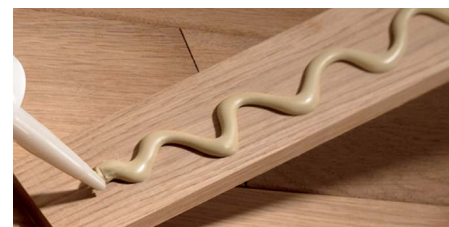
Note: Not suitable as the sole adherent in structural bonding

COMPATIBILITY

- All metal types, incl. stainless steel & anodised aluminium
- Porcelain, marble, ceramics & stoneware
- Concrete, bricks & masonry
- Glass & crystal
- Plastics* & rubbers
- Building materials, incl. plasterboard, particleboard, MDF & finished wood
- Wet & dry timber
- Furniture fabrics, incl. leather & polyester

*Pre-test plastics to determine compatibility

| PART NO. | COLOUR | SIZE |
|--------------|--------|-----------------|
| 8-RS50BG-300 | Beige | 300ml Cartridge |



LUBRICANTS

DEOX R1™ MULTI-PURPOSE LUBRICANT



✓ High quality, superior ingredients and refined mineral oils.

First time, every time lubrication for the professional tradesperson.

Penetrates quickly. Displaces water and repels moisture. Dissolves grease and cleans most metal surfaces. Reduces wear and friction.

Leaves a light surface film behind to prevent corrosion.

Effectively loosens rusted parts and stops squeaks.

Great Australian lubricant for the maintenance of tools, parts, and machinery.

| PART NO. | SIZE |
|-----------|--------------------------|
| CT-R1-300 | 300g Aerosol |
| CT-R1-5L | 5 Litres |
| CT-R1-20L | 20 Litres |
| CT-R1-SPR | 500ml Empty Spray Bottle |



DEOX R56 SUPER LUBRICANT



The ultimate solution for optimising performance - even in challenging conditions. Contains advanced lubricating additives for unparalleled protection.

Quickly penetrates tight spaces, crevices, and hard to reach areas. Allows for the smooth operation of moving and rusted parts.

Beneficial where exposure to moisture, chemicals, and harsh conditions is common. Ideal for the long-term preservation of hand tools.

Stops squeaks. Contains corrosion inhibitors to extend service life.

Protects operating controls, electrical wiring, and more.

| PART NO. | SIZE |
|------------|--------------------------|
| CT-R56-400 | 400g Aerosol |
| CT-R56-5L | 5 Litres |
| CT-R56-20L | 20 Litres |
| CT-R56-SPR | 500ml Empty Spray Bottle |



DEOX R44 SOLVENT-FREE LUBRICANT



✓ Lanolin-based with no silicone or harsh solvents

Lubricates metal surfaces. Rejuvenates stainless steel. Protects against friction and wear. Extends the life of moving or mechanical parts.

Superior corrosion protection. Rust proofs equipment and parts in storage.

Seals against moisture and water intrusion. Clings to most surfaces in wet or dry conditions.

Trusted Australian rust protection product.

FREE OF ALL SILICONES & HARSH SOLVENTS

| PART NO. | SIZE |
|------------|--------------------------|
| CT-R44-300 | 300g Aerosol |
| CT-R44-5L | 5 Litres |
| CT-R44-20L | 20 Litres |
| CT-R44-SPR | 500ml Empty Spray Bottle |



TAP-N-COOL

STRAIGHT CUTTING FLUID



Non-flammable high performance light to medium duty oil. For all metal types.

Formulated with specialised functional chemistry to minimise misting.

Contains solvent refined mineral oils and extreme pressure additives. Includes a non-staining biocide package to resist the formation of bacteria and fungus.

Excellent surface finish. Great anti-wear properties.

✓ Free flowing for rapid dissipation of heat from metal removal and forming operations.

✓ High corrosion inhibition for a rust-free environment - essential for machine tools and finished parts.

| PART NO. | SIZE |
|--------------|--------------|
| CT-SCF-250ML | 250ml |
| CT-SCF-300 | 300g Aerosol |
| CT-SCF-500ML | 500ml |
| CT-SCF-5L | 5 Litres |
| CT-SCF-20L | 20 Litres |

LUBRICANTS

LANOFLEX™ R50 GENERAL PURPOSE LANOLIN



Powerful rust and corrosion preventative. Non-conductive for the protection of battery terminals and wires.

Lanolin-rich formula. Blended with Vapour Corrosion Inhibitors (VCIs) and refined mineral oil distillates. Offers high lubricity and protective properties.

Displaces water and repels moisture. Provides trouble-free long-term mechanical rust-proofing.

Lubricates and cleans most surfaces. Excellent performance on ferrous metals

Leaves a thin, waterproof film behind for enhanced salt spray protection in marine environments.

Safe for use on rubber, paintwork, and most plastics.

Restores and preserves leather, vinyl, and timber. Loosens rusted parts and stops squeaks.

| PART NO. | SIZE |
|--------------|---------------------|
| CT-R50-400 | 400g Aerosol |
| CT-R50-750ML | 750ml Trigger Spray |
| CT-R50-5L | 5 Litres |
| CT-R50-20L | 20 Litres |

LANOFLEX™ R55 HEAVY DUTY LANOLIN



Non-toxic multi-purpose rust preventative. Boasts a powerful formulation of refined mineral oil distillates, lanolin, and Vapour Corrosion Inhibitors (VCIs).

Lubricates, cleans, penetrates, and prevents corrosion. Firm adhesive tendency to most metal surfaces.

Dries leaving a tenacious layer of grease as a natural barrier to moisture and water.

Excellent protection from salt spray deposits. Excellent protective properties for ferrous metals.

Ideal for the long term outdoor storage of tools and equipment.

Excellent leather protector.

Seals and preserves timber.

Safe on rubber, paintwork, and most plastics.

| PART NO. | SIZE |
|--------------|---------------------|
| CT-R55-400 | 400g Aerosol |
| CT-R55-750ML | 750ml Trigger Spray |
| CT-R55-5L | 5 Litres |
| CT-R55-20L | 20 Litres |

DEOX R14 UNIVERSAL SILICONE PASTE



- ✓ RUBBER & O-RING LUBRICANT
- ✓ FANTASTIC DIELECTRIC GREASE

Excellent dielectric properties. Extreme high and low temperature capabilities. High drop point and remains tacky for longer.

Great water resiliency and oxidation resistance.

Shields from moisture and contaminants. Provides a rust-proof seal against environmental exposure and corrosion.

Can be used as a long term lubricant for plastics and rubbers. Reduces friction and increases the life of vacuum seals, o-rings, belts, and non metal-to-metal moving components.

Insulates spark plugs and electrical wiring.

Extends times between servicing. Results in reduced labour and maintenance costs on machinery and equipment.

| PART NO. | SIZE |
|--------------|---------------|
| CT-R14-50G | 50g Tube |
| CT-R14-1KG | 1 Kilogram |
| CT-R14-2.5KG | 2.5 Kilograms |

DEOX R60 HEAVY DUTY SILICONE SPRAY

+ R60 WITH PTFE



Water displacing light lubricant. High industrial grade lubrication. Prevents binding and freezing.

Particularly suited to non-metal materials incompatible with conventional, mineral-based lubricants. Superior wear protection.

Excellent corrosion resistance to extreme weather and temperature conditions, salt spray deposits, and some chemical assaults.

Leaves a residual friction-reducing film behind to protect from wear in non-load bearing mechanical assemblies.

Fantastic non-sticking mold release agent.

- ✓ Vinyl ✓ Leather ✓ Wood ✓ Metal
- ✓ Aluminium ✓ Chrome ✓ Paintwork
- ✓ Most Rubbers & Plastics*

*May affect some silicone rubbers and delicate plastics. Be sure to test surfaces first.

| PART NO. | SIZE |
|----------------|--------------|
| CT-R60-300 | 300g Aerosol |
| CT-R60PTFE-300 | 300g Aerosol |

Added PTFE provides extra load carrying capacity when compared to most general purpose lubricants



LUBRICANTS

HYDROLUBE ANTI-WEAR TAP LUBRICANT GEL

'Plumber's Grease' engineered to withstand the harsh conditions and demands of plumbing systems.

Provides superior rust and corrosion protection for efficient operation of components.

Excellent anti-wear properties and friction reduction on moving parts. Forms a protective film that prevents metal-to-metal contact.

Maintains the flexibility of seals, o-rings, and gaskets to resist cracking and prevent leaks.

Can be used in wet or dry applications. Retains lubricating properties in the presence of water.

Protects fixtures and components from degradation caused by moisture and chemical exposure.

Suitable for faucets, valves, o-rings, seals, stems, threaded connections, and all other plumbing applications.



Compatible with most plumbing materials, including rubber, plastic, brass, and stainless steel.

Meets Military Specification: MIL-G-10924C

- ✓ Faucet & Ball Valves
- ✓ Shower Diverter Valves
- ✓ O-Rings & Seals
- ✓ Toilet & Sink Gaskets
- ✓ Threaded Connections
- ✓ Cartridges & Ceramic Discs

| PART NO. | SIZE |
|-------------|----------|
| CT-ATL-50G | 50g Tube |
| CT-ATL-250G | 250g Tub |

**BRAND NEW PRODUCT
IMAGES COMING SOON**

HYDROLUBE PIPE JOINTING COMPOUND WITH PTFE

High performance, multi-purpose and versatile. For use with gases, potable water, a wide range of chemicals, and various liquids where immediate pressurisation is needed. Exceptional sealing properties, ensuring tight and leak-free connections.

Soft setting and engineered with a unique composition to provide excellent thread sealing properties, prevent leaks, and ensure reliable connections. Recommended for taper thread connections up to 50mm (2") in diameter.

Enriched with PTFE and natural fillers for enhanced lubrication. Reduces friction during assembly, facilitating easy installation and disassembly of threaded connections.

Long lasting and durable - withstands harsh environments and maintains sealing properties in extreme conditions. Reduces the need for frequent re-application.

Low odour and non-toxic. Contains no petroleum, lead, or metals to minimise environmental impact.

- ✓ Plumbing & Pipe Fittings
- ✓ HVAC Systems
- ✓ Gas Distribution Systems
- ✓ Industrial Piping
- ✓ Water Treatment & Distribution
- ✓ Automotive & Marine Applications
- ✓ Irrigation Systems
- ✓ Chemical Handling Systems
- ✓ Industrial Maintenance & Repair

**BRAND NEW PRODUCT
IMAGES COMING SOON**



Exhibits excellent performance across a wide temperature range: -18°C to 120°C

| PART NO. | SIZE |
|--------------|----------------|
| CT-PJC-500BT | 500g Brush Top |
| CT-PJC-2.5KG | 2.5 Kilograms |
| CT-PJC-20KG | 20 Kilograms |

HAND CLEANERS

KLEANITIZE CITRA-GRIT & MINT-GRIT HAND CLEANERS

Premium, solvent-free industrial strength heavy duty hand wash.

Removes the toughest soils, including grease.

Contains ultra-fine exfoliating particles to soften hard working hands.

Active chelating ingredient binds with common heavy metals, allowing them to be washed away with water.

Neutralises strong workshop odours. Kills a broad array of bacterial germs.

Does not sting or burn cuts, scrapes, and open wounds.

Will not scratch or irritate sensitive skin.

Leaves skin feeling smooth and smelling pleasant.

Highly recommended for all workshops and manufacturing facilities.

| PART NO. | SIZE |
|-------------|----------------------|
| CT-HC-500ML | 500ml Squeeze Bottle |
| CT-HC-5L | 5 Litre Hand Pump |
| CT-HC-20L | 20 Litre Drum |

Pleasant
Citrus
Aroma



| PART NO. | SIZE |
|--------------|----------------------|
| CT-MHC-500ML | 500ml Squeeze Bottle |
| CT-MHC-5L | 5 Litre Hand Pump |
| CT-MHC-20L | 20 Litre Drum |

Light
Spearmint
Aroma



SPECIALISED GREASES

THERMALLE™ OXYGUARD

Non-Flammable Oxygen Safe Grease with PFPE

Contains a medium viscosity perfluorinated polyether (PFPE) base oil thickened with PTFE.

Physically and chemically inert and safe for high pressure air, nitrous oxide, and oxygen systems with no fear of combustion.

Compatible with the most aggressive chemical and gas applications.

Completely resistant to water and all common chemicals.

Resistant to oxidation and thermal degradation. Exceptional thermal stability.

Formulated for lifetime sealed maintenance bearings, extreme long-term lubrication, and resistance to friction and component wear.

Safe for use in breathing regulators for scuba diving, personal protective equipment, and medical purposes.



OXYGUARD
is **FREE** from
petroleum
based
ingredients



**RECOMMENDED
FOR SCUBA
DIVING
AND DEEP SEA
EQUIPMENT**

COMMON APPLICATIONS

- Bearings, stop cocks, o-rings, and gaskets in wet or dry conditions
- All types of bearing threads in aggressive or corrosive conditions, incl. temperature extremes
- Lifetime sealed, maintenance-free bearings
- Mechanical parts operating at high vacuum conditions in contact with aggressive chemicals or oxygen
- Components operating under medium load at high speed
- Breathing regulators for scuba diving, personal protective equipment, and medical purposes
- Articulation components subjected to consistent high temperatures
- Clean room applications in the food, nuclear, chemical, oxygen, and aerospace industries

DEOX R20 FOOD SAFE MACHINE GREASE

High performing lubrication for mildly acidic and very wet environments.

Contains pharmaceutical base oils and a complex calcium sulphionate thickener.

Safe for use in areas of incidental food contact.

Universally compatible with industrial kitchen appliances.

Excellent thermal stability. High drop point.

Exceptional mechanical stability and extreme pressure resistance with very high load carrying capacity.

Superior waterproof properties and high resistance to wash-out.

Excellent resistance to oxidation and corrosion.

Protects from wear and friction. Reduces scuffing, scoring, and seizure of contacting surfaces.



| PART NO. | SIZE |
|----------------|----------------|
| CT-R20FS-50G | 50g Tube |
| CT-R20FS-300 | 300g Aerosol |
| CT-R20FS-450G | 450g Cartridge |
| CT-R20FS-2.5KG | 2.5 Kilograms |

THERMALLE™ TEF-EASE

Dielectric Dissimilar Metals Anti-Corrosion & Anti-Seizing Gel

Pure synthetic grease. No silica, petroleum additives, or volatile solvents.

Lubricates and protects threaded connections and fasteners.

Prevents metal-to-metal contact. Contains sub-micron sized PTFE particles for high lubricity.

Prevents o-rings, seals, and gaskets from drying and cracking, leading to leakage.

Blocks out and resists corrosion and seizure of bolts, nuts, and screws.

Completely waterproof and resists wash-out in both salt water and fresh water.

Excellent electrical insulation and protection. High dielectric properties.

Adheres well to surfaces long term.

Performs perfectly when under extreme pressures and high loads. Allows for smooth operation and extends the lifespan of moving parts.

Non-curing & non-melting.

Compatible with most plastics and rubbers.

FIND MORE SPECIALTY GREASES AT:
WWW.CHEMTOLS.COM.AU

THERMALLE
SPECIALTY GREASES

| PART NO. | SIZE |
|---------------|--------------|
| CT-TM005-05PT | 5ml Syringe |
| CT-TM005-10PT | 10ml Syringe |
| CT-TM005-50T | 50g Tube |
| CT-TM005-250G | 250g Tub |
| CT-TM005-1KG | 1 Kilogram |



PAINTS & COATINGS

SPOT IT • SURVEY MARKING PAINTS ✓ COLOUR VISIBILITY ✓ RETENTION ✓ DURABILITY

HIGHEST QUALITY MARKINGS



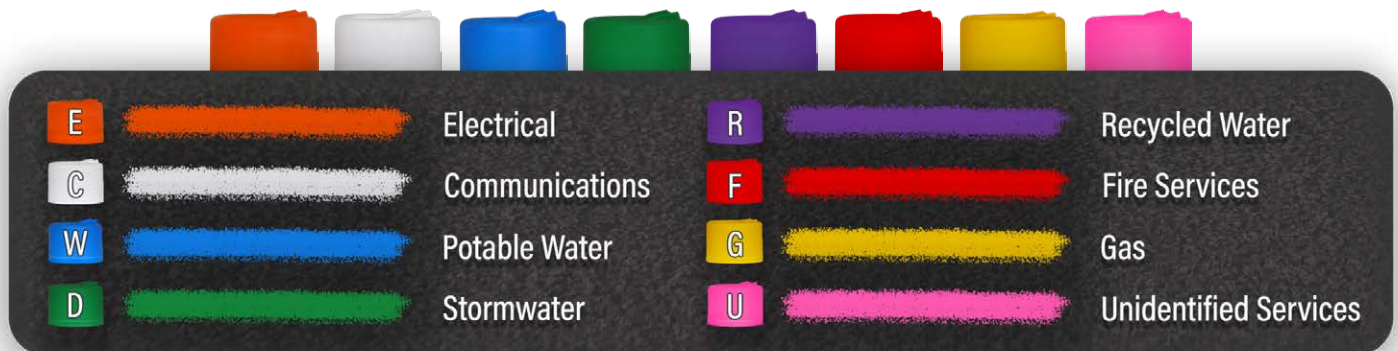
Left to Right: Purple, Black, Green, White, Yellow, Red, Blue, Fluro Yellow, Fluro Pink, Fluro Orange, Fluro Green, Fluro Blue

*Visibility varies with traffic and exposure

- ▶ Contains a special resin and pigment system to provide long-term durability. Formulated for high fluorescence with a high density of colour pigments in every can.
- ▶ Non-freezing formula is operational to -10°C and withstands the harshest of weather conditions. Paint is touch dry in 5 minutes providing good results when sprayed over damp grass wet with dew.
- ▶ Leaves a lasting mark for up to 6 months*. Exceptional coverage on rough or porous surfaces such as bitumen, concrete, asphalt, masonry, timber, dirt, turf, and shrubbery.
- ▶ Easy and effective to use by hand with no marking trolley or machinery required. Specially designed for inverted use with a high delivery flow valve for faster and better coverage.
- ▶ Non-clogging nozzle in combination with quality ingredients means paint will not run dry. Aerosol empties completely down to the very last drop.
- ▶ No side-splatter (or dirty fingers) - written markings are easily identifiable with little to no extensive bleeding. Ideal for roadworks, excavation, construction, pipework, surveying, and utilities marking.
- ▶ Safer ingredients for the user and the environment: contains no added lead or chlorinated solvents.
- ▶ Range includes colours noted in the Australian Standard** for universal recognition of underground infrastructure or above ground assets. These include:

| PART NO. | COLOUR | SIZE |
|-------------|--------------|--------------|
| CT-SP-350BK | Black | 350g Aerosol |
| CT-SP-350BL | Blue | 350g Aerosol |
| CT-SP-350FB | Fluro Blue | 350g Aerosol |
| CT-SP-350FG | Fluro Green | 350g Aerosol |
| CT-SP-350FO | Fluro Orange | 350g Aerosol |
| CT-SP-350FP | Fluro Pink | 350g Aerosol |
| CT-SP-350FY | Fluro Yellow | 350g Aerosol |
| CT-SP-350GN | Green | 350g Aerosol |
| CT-SP-350PL | NEW! Purple | 350g Aerosol |
| CT-SP-350R | Red | 350g Aerosol |
| CT-SP-350WT | White | 350g Aerosol |
| CT-SP-350Y | Yellow | 350g Aerosol |

**Australian Standard AS5488-2013
Classification of Subsurface Utility Information



MARKING USING SYMBOLS: Using the correctly coloured marking paint along with known associated symbols such as arrows and numbers will ensure the painted message is understood if the marked location is subsurface. Symbols identify widths, depths, locations and much more - particularly on excavation sites. The Australian Standard lists markings under 4 classes: ▪ QL-(A) Sighted ▪ QL-(B) Traced ▪ QL-(C) Aligned from surface features ▪ QL-(D) Any other method

PAINTS & COATINGS

GALMAX™ 90 COLD GALVANISING PAINT & WELD THROUGH PRIMER



99% zinc purity. 90% zinc in dry film.

Matte finish.

Ideally suited to touch-up welds and damaged structures or components. Protects clean steel in the same manner as hot dip galvanising, ie, by cathodic reaction.

Exceptional long-term protection against rust and corrosion.

Becomes indistinguishable to normal weathered galvanising when top-coated with GalMax™ SG Silver 3-in-1 Galvanising Paint.

Can also be top-coated with GalMax™ NPR Coloured Galvanising Paint.



GalMax™ 90 Sprayable

| PART NO. | SIZE |
|-----------|--------------|
| CT-CG-400 | 400g Aerosol |
| CT-CGS-1L | 1 Litre |
| CT-CGS-4L | 4 Litres |



GalMax™ 90 Brushable

| PART NO. | SIZE |
|-----------|----------|
| CT-CGB-1L | 1 Litre |
| CT-CGB-4L | 4 Litres |

MORE GREAT GALMAX™ PRODUCTS AVAILABLE
ONLINE AT: WWW.CHEMTOLS.COM.AU

GALMAX™ SG 3-IN-1 SILVER GALVANISING PAINT



Fast drying. Exceptional rust and corrosion protection.

Weathers to the same colour as hot dip galvanising.

Suits touch-up welds and damaged structures or components. Can be used extensively in the maintenance and restoration of damaged or worn galvanised metal.

TIP • Double-guarantee your corrosion protection on steel and iron structures or equipment by priming surfaces first with GalMax™ 90 Cold Galvanising Paint with 90% zinc in dry film.

| PART NO. | SIZE |
|-----------|--------------|
| CT-SG-400 | 400g Aerosol |
| CT-SG-1L | 1 Litre |
| CT-SG-4L | 4 Litres |
| CT-SG-20L | 20 Litres |

GALMAX™ NPR COLOURED GALVANISING PAINT



- ✓ Radiators ✓ Industrial Mufflers
- ✓ Metal Roofs ✓ Roads & Bridges
- ✓ Fences & Pipes ✓ Offshore Rigs

TIP • For long-term and added protection on fresh welds or in coastal environments, prime the surface first with GalMax™ 90 Cold Galvanising Paint.

| PART NO. | COLOUR* | SIZE |
|--------------|----------------------|--------------|
| CT-BSG-400 | NEW! Blue | 400g Aerosol |
| CT-BKSG-400 | Black | 400g Aerosol |
| CT-BLSG-400 | Steel Blue (renamed) | 400g Aerosol |
| CT-CYSG-400 | Caterpillar® Yellow | 400g Aerosol |
| CT-FBSG-400 | NEW! Ford Blue | 400g Aerosol |
| CT-JDSG-400 | John Deere® Green | 400g Aerosol |
| CT-GSG-400 | Green | 400g Aerosol |
| CT-KOSG-400 | NEW! Kubota® Orange | 400g Aerosol |
| CT-MBKSG-400 | Matte Black | 400g Aerosol |
| CT-MFRSG-400 | Massey Ferguson Red | 400g Aerosol |
| CT-MWSG-400 | Matte White | 400g Aerosol |
| CT-OSG-400 | Orange | 400g Aerosol |
| CT-RSG-400 | Red | 400g Aerosol |
| CT-WSG-400 | White | 400g Aerosol |
| CT-YSG-400 | Safety Yellow | 400g Aerosol |

*All colours have a semi-gloss finish unless otherwise noted



Left to

Right: Red (RSG), Massey Ferguson Red (MFRSG), Safety Yellow (YSG), Caterpillar® Yellow (CYSG), Black (BKSG), Matte Black (MBKSG), NEW! Kubota® Orange (KOSG), Orange (OSG), John Deere® Green (JDSG), Green (GSG), White (WSG), Matte White (MWSG), NEW! Blue (BSG), NEW! Ford Blue (FBSG), Steel Blue (BLSG - Note: Originally called 'Blue', now renamed for clarity)

Please Note: Cap is approximate colour only

NOW IN 15 COLOURS!

Direct to metal corrosion protection.

Dries to a smooth and durable rust-fighting finish.

Protects steel and iron structures or equipment from corrosion. Use extensively in the maintenance and restoration of damaged or worn galvanised metal.

Excellent adhesion to most metal surfaces. Can also be used on concrete and ceramics. Great for use on marine and offshore rigs.

SOLDERING CONSUMABLES

Chemtools produces solid and cored wire solder, bar solder, liquid flux, and solder pastes for industries ranging from Plumbing to Electronics, Metal Working, Construction, and numerous others.

Products are formulated with the end users in mind, with our premium solder wire and flux products being accessible to everyone from do-it-yourself enthusiasts to industry professionals.

VIO-FLUX

WWW.CHEMTOLS.COM.AU

VIEW OUR RANGE OF
SOLDERING
CONSUMABLES,
FLUX LIQUIDS,
FLUX PASTES & MORE



LEADED SOLDER WIRE: SN63/PB37

| PART NO. | WIDTH |
|-------------|-------|
| CT-6308-500 | 0.8mm |
| CT-6312-500 | 1.2mm |
| CT-6316-500 | 1.6mm |
| CT-6320-500 | 2.0mm |
| CT-6332-500 | 3.2mm |

LEAD FREE SOLDER WIRE

| PART NO. | WIDTH |
|-------------|-------|
| CT-LF08-500 | 0.8mm |
| CT-LF12-500 | 1.2mm |
| CT-LF16-500 | 1.6mm |
| CT-LF20-500 | 2.0mm |



General purpose, mildly activated flux core solder wire.

Good flux activation and excellent tarnish and oxide removal during the solder process.

Results in bright, shiny solder joints.

VIOFLUX HIGH ACTIVITY LIQUID FLUX



General purpose acid-based flux.

Specially blended to become active at room temperature where it begins to clean metals and remove oxides.

Exerts a strong scavenging action to remove oxide coatings and other impurities.

COMPATIBLE SURFACES

- ☒ Copper ☒ Stainless Steel
- ☒ Soft Metals ☒ Nickel ☒ Brass
- ☒ Monel ☒ Ferrous Alloys
- ☒ High-Chrome Alloys

Produces
clean, strong
joints

| PART NO. | SIZE |
|-----------|-----------|
| CT-VF-1L | 1 Litre |
| CT-VF-5L | 5 Litres |
| CT-VF-20L | 20 Litres |

VIOFLUX HIGH ACTIVITY FLUX PASTE

High viscosity and creamy texture.

Compatible with all lead-free and common soft solders.

Holds its form and stays in place while soldering. Promotes excellent solderability.

Specifically designed for use on copper, brass, tin and lead.

Post-soldering residues can be easily wiped clean.

| PART NO. | TYPE | SIZE |
|------------|----------------|-----------|
| CT-VFP-150 | Paste-like Gel | 150 grams |



LEAK DETECTION

HYDROLUBE GAS LEAK DETECTION SPRAY

Provides a quick and reliable method for identifying leaks in gas lines, connections, fittings, and valves.

Ensures the integrity of gas systems and equipment.

Recommended for sourcing leaks in multiple types of distribution systems, including those used in manufacturing plants, refineries, and chemical facilities.

Offers rapid and precise visual indication. Forms bubbles to display the presence of a leak.

Highly sensitive to allow detection of even the smallest gas escape. Enhances safety and prevents potential hazards.

Assists professionals, DIY enthusiasts, and homeowners during gas installation, modification, or repair work.

Suitable for use with natural gas, propane, methane, butane, and other common gases.

Non-corrosive and can be applied to metals, plastics, and rubbers.



- ☒ Storage Tanks ☒ Cylinders ☒ Compressors ☒ Stoves & Ovens
- ☒ Water Heaters ☒ Furnaces ☒ Gas Meters ☒ Pressure Relief Devices
- ☒ HVAC Systems ☒ Refrigeration ☒ Boilers ☒ Condensers
- ☒ Evaporators ☒ Fuel Lines, Tanks & Injectors

| PART NO. | SIZE |
|--------------|---------------------|
| CT-GLD-250ML | 250ml Pump Bottle |
| CT-GLD-750ML | 750ml Trigger Spray |

**BRAND NEW PRODUCT
IMAGES COMING SOON**

CLEANING SOLUTIONS

KLEANIUM™ IPA - 99.8% PURE ISOPROPYL ALCOHOL

Mild, effective, and economical. Free of CFCs, chlorinated solvents, and denaturants.

Quickly cleans a variety of soils, including flux residues, light oils, polar, organic, and ionic residues.

Safe on most plastics, elastomers, and rubbers. Ideal for critical or delicate cleaning such as magnetic tape heads, optical and precision instruments, and printed circuit boards.

Can be used as a release agent for glues.

| PART NO. | SIZE |
|--------------|-------------------------|
| CT-ISO-250ML | 250ml Finger Pump Spray |
| CT-ISO-750ML | 750ml Trigger Spray |
| CT-ISO-1L | 1 Litre |
| CT-ISO-5L | 5 Litres |
| CT-ISO-20L | 20 Litres |



DEOX R22 'CITRASHIFT' INDUSTRIAL CLEANER & DEGREASER

Instantly emulsifies oils, greases, and fats. Contains no harsh acids, alkalis, or petroleum solvents.

Ideal for concrete and workshop floors, and motorised tools and equipment.

Water soluble, streak-free and free rinsing.

✔ Great on electrical components & heavy machinery



✔ CITRUS-BASED FORMULA

Removes adhesives, resins, printing inks, decals, rubber solvents, and much more.

✔ Extremely strong citrus fragrance to deodorise effectively

| PART NO. | SIZE |
|--------------|---------------------|
| CT-R22-300 | 300g Aerosol |
| CT-R22-750ML | 750ml Trigger Spray |
| CT-R22-5L | 5 Litres |
| CT-R22-20L | 20 Litres |

CONCENTRATED ALKALINE DRAIN CLEANER

Powerful and highly effective. Rapidly unclogs and clears blocked drains. Dissolves and removes organic matter, grease, hair, and other debris.

Quick and efficient solution for maintaining clear and free-flowing drains: simply apply, let stand, and flush with hot or cold water.

Utilises a potent alkaline formula to dissolve and break down stubborn blockages, ensuring maximum cleaning effectiveness.

Suitable for use in sinks, showers, bath tubs, and floor drains, as well as septic systems and sewer lines.

Compatible with most plumbing materials, including PVC, metal, and cast-iron pipes.

Concentrated formula can be diluted with water and poured directly into drains.

Contains biodegradable ingredients to minimise environmental impact.

| PART NO. | SIZE |
|------------|-----------|
| CT-ADC-1L | 1 Litre |
| CT-ADC-5L | 5 Litres |
| CT-ADC-20L | 20 Litres |

BRAND NEW PRODUCT
IMAGES COMING SOON

LINT FREE WIPES

Completely sterile. Made from ultra-clean cellulose and long polyester fibres. Highly absorbent and extremely soft.

Free of lint and low in particulate and non-volatile residues. Will not allow dust to cling.

Static-free when used with liquids.

Provides superior cleaning without the risk of surface scratching.

Ideal for wiping sensitive parts and equipment, such as optical and precision instruments, screens, and printer parts.

Recommended for use with all industrial liquids and solvents.



| PART NO. | SHEET SIZE | MATERIAL |
|------------|-------------|--|
| CT-LFW-100 | 30cm x 35cm | Non-woven blend of polyester and lyocell |

HEAVY DUTY RUST, LIME & CALCIUM REMOVER

Powerful, rapid action solution. Easily and effectively removes lime, calcium deposits, and rust stains.

Efficiently dissolves and eliminates tough mineral build-up. Restores surfaces, leaving them shiny and clean.

Scratch-free, non-abrasive formula. Suitable for use on porcelain, ceramic, glass, stainless steel, chrome, and other non-porous materials.

Requires minimal scrubbing and/or agitation.

Environmentally friendly and biodegradable.



| PART NO. | SIZE |
|--------------|---------------------|
| CT-RLC-750ML | 750ml Trigger Spray |
| CT-RLC-5L | 5 Litres |
| CT-RLC-20L | 20 Litres |

BRAND NEW PRODUCT
IMAGES COMING SOON

ACCESSORIES

GENERAL UTILITY BRUSH

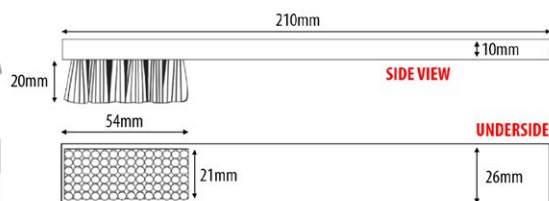
Multiple rows of hog hair on an extra large brush base.

Great for sweeping polished surfaces.

Can be used wet or dry.



| PART NO. | LENGTH | BRISTLE DIMENSIONS | BRISTLE LENGTH |
|----------|--------|--------------------|----------------|
| 8-BR22 | 210mm | 54mm x 21mm | 20mm |



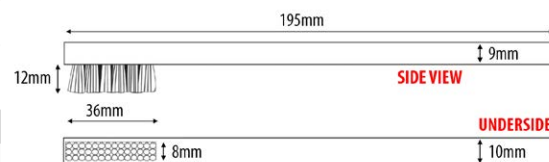
SOFT BRASS STEEL BRUSH

Heavy duty triple row cleaning brush. High grade brass steel bristles.

Removes chemical build-up and flux deposits. Cleans hot solder tips without damage.



| PART NO. | LENGTH | BRISTLE DIMENSIONS | BRISTLE LENGTH |
|----------|--------|--------------------|----------------|
| 8-BR25 | 195mm | 36mm x 8mm | 12mm |



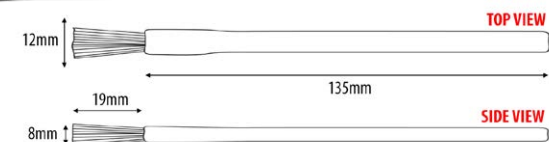
ACID BRUSH - SINGLE-USE

Rolled tin handle. Horse hair bristles. Handy and economical.

Great for once-only use with glues, solvents, acids, fluxes, greases, and other coatings. Ideal for touch-ups, dusting, and most odd workshop jobs.



| LENGTH | BRUSH SIZE | PART NO. PACK OF 12 | PART NO. BOX OF 144 |
|--------|-------------------------------|---------------------|---------------------|
| 135mm | 19mm (L) x 12mm (W) x 8mm (H) | 8-BR35-12 | 8-BR35-144 |



FULLY ASSEMBLED SYRINGES

Industrial grade. Leak-free. Made from high density polypropylene. Clear plastic barrels allow graduated measurements to be easily read.

Suitable for use manually or on air-powered dispensers. Safe for use with adhesives, chemicals, solvents, gels, and pastes.

Luer lock compatible. Fits all tapered and steel needle dispensing tips on this page.

Arrives ready-to-use with plunger rod and rubber piston in place.

GRADUATIONS: 30cc/30ml: 2.0 ml 10cc/10ml: 0.5 ml 5cc/5ml: 0.2 ml 3cc/3ml: 0.1 ml

| PART NO. | CAPACITY | LENGTH | BARREL INNER / OUTER DIAM. | PACK SIZE |
|-------------------|-------------|---------|----------------------------|-------------|
| DCT-MSG803LL-20PK | 3cc / 3ml | 76.4mm | ID: 8.9mm / OD: 10.9mm | 20 Syringes |
| DCT-MSG805LL-15PK | 5cc / 5ml | 74.6mm | ID: 12.7mm / OD: 14.7mm | 15 Syringes |
| DCT-MSG810LL-10PK | 10cc / 10ml | 85.2mm | ID: 14.4mm / OD: 16.4mm | 10 Syringes |
| DCT-MSG830LL-5PK | 30cc / 30mm | 118.3mm | ID: 22.6mm / OD: 25.2mm | 5 Syringes |



Luer lock Tip Caps not included with fully assembled syringes. Available separately:

| PART NO. | DESCRIPTION | COMPATIBILITY | PACK SIZE |
|----------------|----------------------------------|---------------|-----------|
| DCT-54BLL-10PK | Syringe Luer Lock Tip Cap (Blue) | Universal | 10 Caps |



ASSORTED DISPENSING NEEDLE KIT

Includes a selection of the most popular stainless steel straight, bent, and tapered tips.

Blunt stainless steel cannula. Double helix polypropylene leak-free luer lock hub. Free of silicone and chloride.

Burr-free with an electro-polished needle for unobstructed and consistent material flow.

Max operating pressure: 100 PSI (6.9 bar)

| PART NO. | KIT CONTENTS | QTY |
|---------------|--|---------------|
| DCT-ND-KIT-50 | Assorted Stainless Steel Dispensing Tips | Set of 50 pcs |



| PLASTIC HUB + ST/STEEL CANULA | | INNER DIAMETER | | OUTER DIAMETER | |
|-------------------------------|-------|----------------|------|----------------|------|
| COLOUR | GAUGE | IN | MM | IN | MM |
| Olive | 14 | 0.069 | 1.77 | 0.083 | 2.11 |
| Amber | 15 | 0.059 | 1.51 | 0.072 | 1.83 |
| Green | 18 | 0.038 | 0.99 | 0.049 | 1.27 |
| Pink | 20 | 0.025 | 0.64 | 0.036 | 0.91 |
| Blue | 22 | 0.020 | 0.46 | 0.028 | 0.72 |
| Red | 25 | 0.012 | 0.30 | 0.020 | 0.51 |

Other Measurements

- Total Height: 32mm [1.25 in]
- Stainless Steel Canula (L): 12.7mm [0.5 in]
- Plastic Luer Lock Hub (H): 19.3mm [0.76 in]

PLUMBING ESSENTIALS

2023 - 2024
CATALOGUE



AUSTRALIA PH: 1300 738 250

NEW ZEALAND PH: +64 3 323 4177 • SINGAPORE PH: +65 6 363 2643

YOUR LOCAL SALES REPRESENTATIVE IS:

**AUSTRALIAN MANUFACTURING FACILITY:
UNIT 2, 14 - 16 LEE HOLM ROAD ST MARYS NSW 2760 AUSTRALIA**

V2-2024.02.07

CHEMTOOLS.COM.AU • CHEMTOOLS.CO.NZ